



GMT

262 Oakwood Crescent
Oakville

Welcome to 262 Oakwood Crescent

Set on a premium lot in one of Oakville's, family-friendly neighbourhoods, this property presents a rare opportunity to live comfortably as-is, renovate over time, or design and build a custom home surrounded by newer luxury residences.

The existing residence features a well-designed layout with over 1,700 sq ft on the main level, offering spacious principal rooms ideal for everyday living and entertaining.

THE GOODALE MILLER TEAM

Listing Agents: Brad Miller, Kieran McCourt & Brian Lyall



Property Highlights

| | |
|------|---|
| BEDS | 4 |
|------|---|

| | |
|-------|---|
| BATHS | 2 |
|-------|---|

| | |
|----------|------------------|
| LOT SIZE | 90.07' x 150.77' |
|----------|------------------|

| | |
|-------------|-------------|
| ABOVE GRADE | 1,731 sq ft |
|-------------|-------------|

| | |
|-------------|-------------|
| TOTAL SQ FT | 3,295 sq ft |
|-------------|-------------|

| | |
|-------|----------------|
| TAXES | \$7,904 / 2025 |
|-------|----------------|





Main Level

A bright living and dining area flows seamlessly into a generous kitchen with breakfast area, while the expansive family room creates a warm, central gathering space with direct access to the covered deck perfect for indoor-outdoor living.

The main level is complete with four well-proportioned bedrooms, including a comfortable primary suite, making it an ideal layout for families, downsizers, or those looking to customize over time.





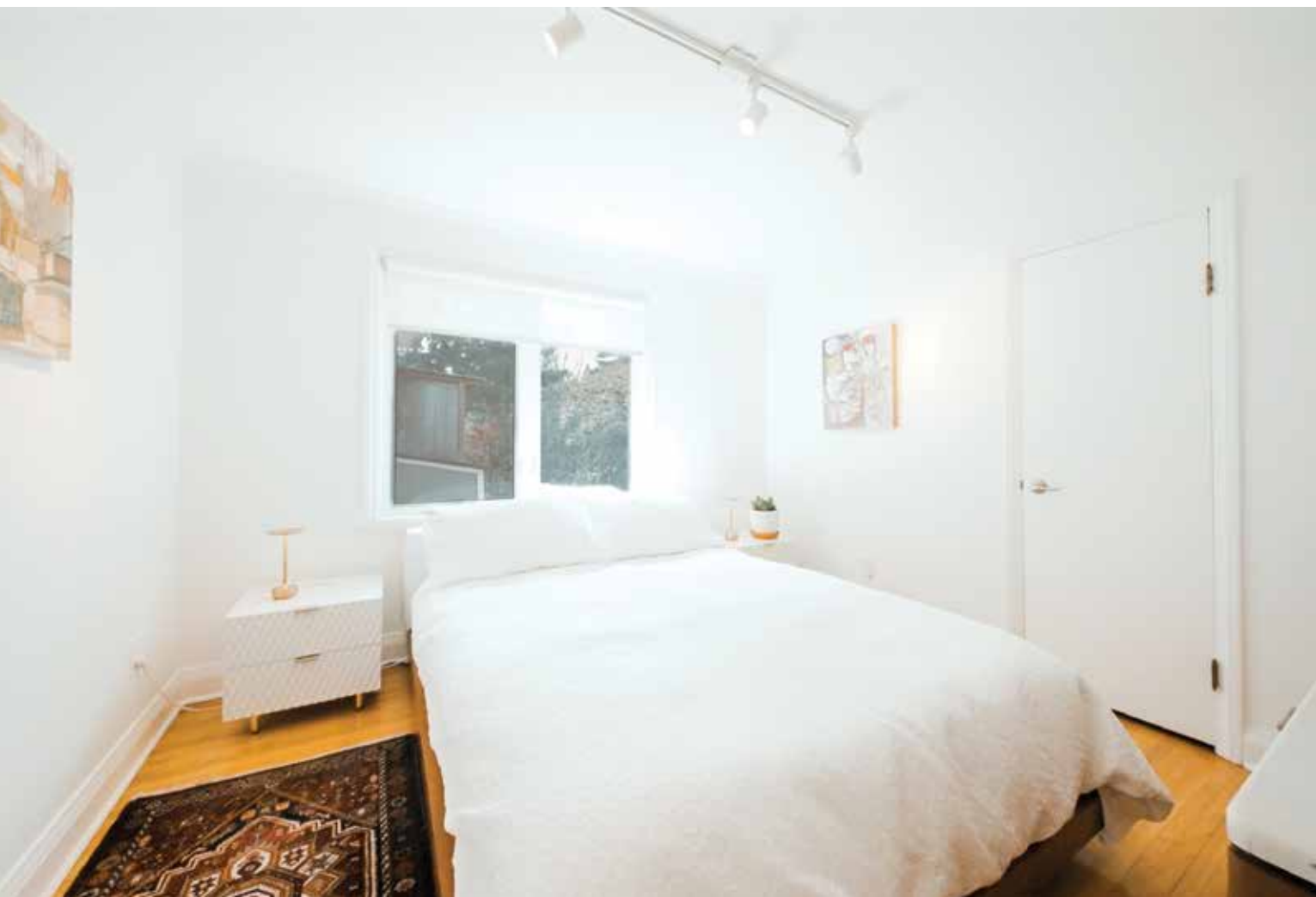




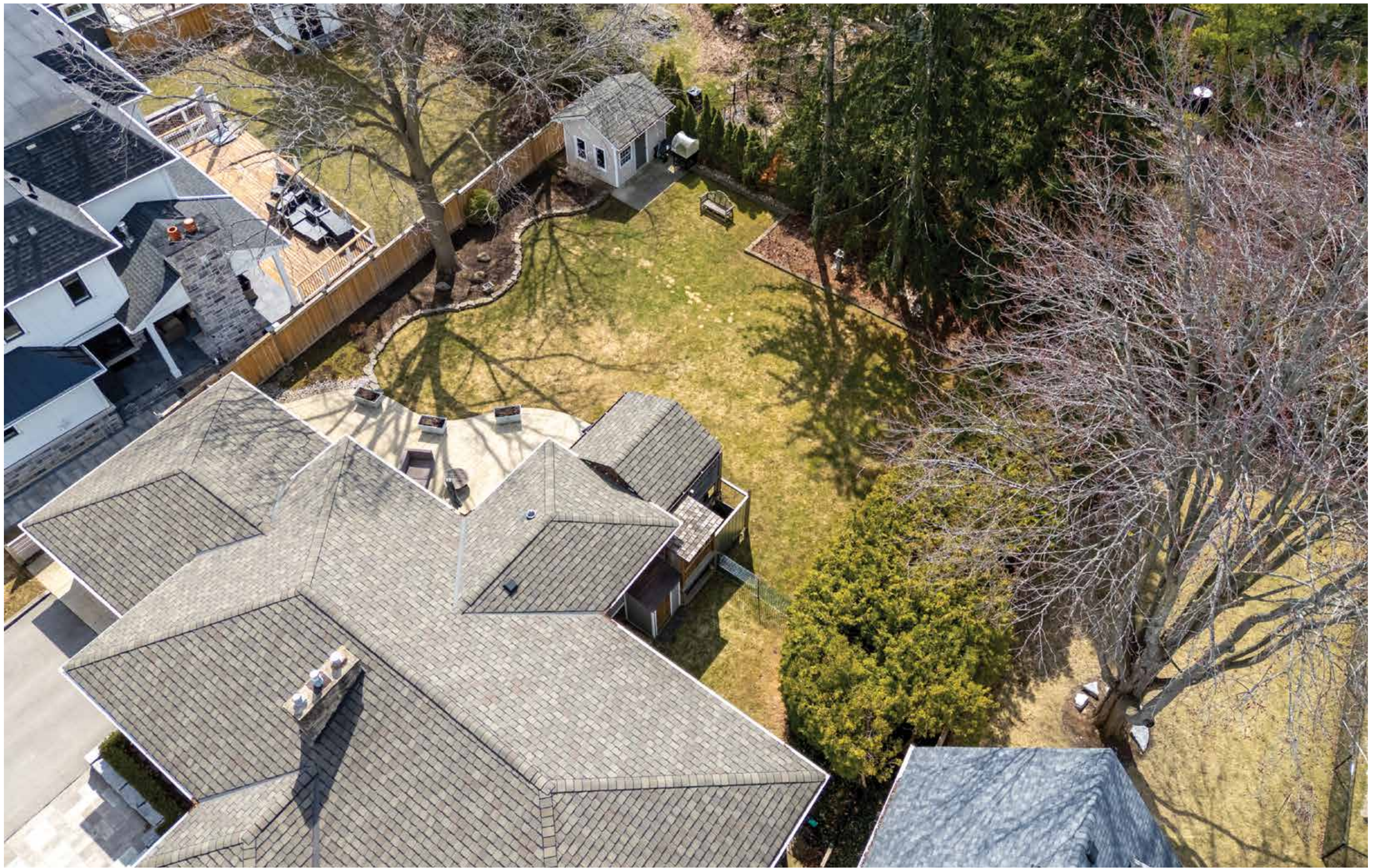


Lower Level

The finished lower level adds significant versatility with over 1,500 sq ft of additional space. Featuring a large recreation room with fireplace, dedicated office, den, laundry room and ample storage. This level offers endless possibilities for extended family living, work from home setups, or future redesign.







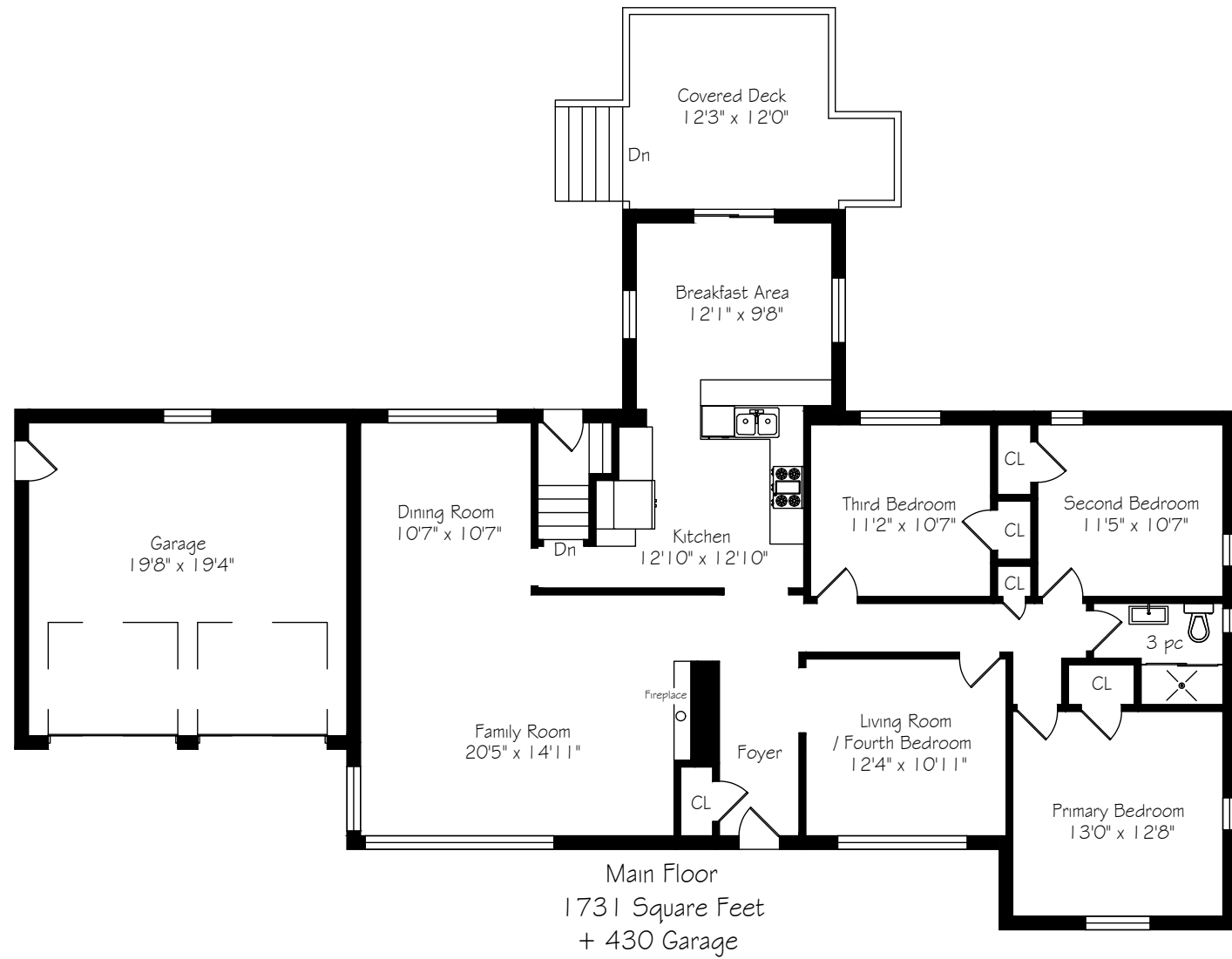


Backyard

Step outside to a large, private backyard framed by mature, towering trees. An ideal setting for both relaxation and entertaining. Enjoy a beautifully designed stone patio, perfect for summer evenings, along with a charming garden shed for added storage and functionality. The expansive lot provides ample space for children to play, gardening enthusiasts or a future addition.

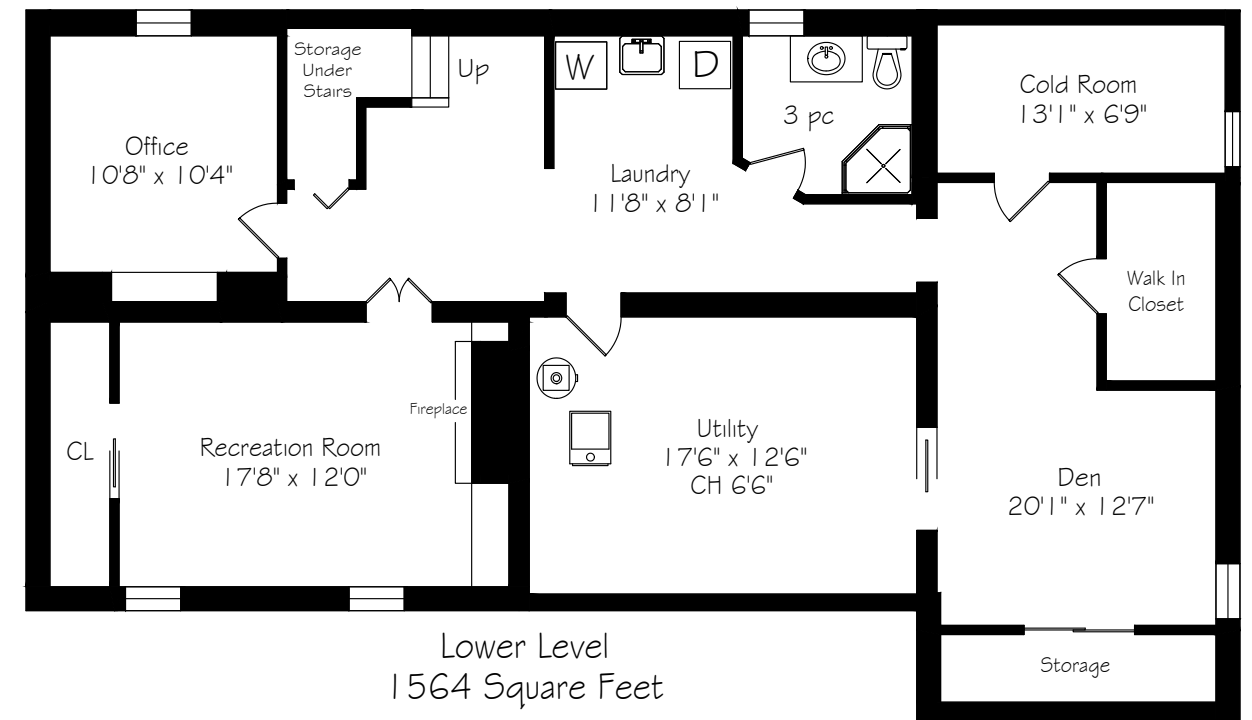


Main Level Floor Plan



*Room sizes should be considered approximate since measurements are subject to certification.

Lower Level Floor Plan



*Room sizes should be considered approximate since measurements are subject to certification.



GoodaleMillerTeam
CENTURY 21 MILLER REAL ESTATE LTD. BROKERAGE

905.338.2121 | GoodaleMillerTeam.com